



Office of the Governor
MICHELLE LUJAN GRISHAM



STATE OF NEW MEXICO

2021
Annual Report

New Mexico

Corrections Department

A message from the Cabinet Secretary



I am honored to serve the great State of New Mexico under the vision and leadership of the Honorable Governor Michelle Lujan Grisham. I am dedicated to making the New Mexico Corrections Department among the best in the country. Recently, NMCD began an internal restructure to shift focus towards transition planning and successful outcomes in community supervision. This approach emphasizes professionalism, respect, skill-building, creativity, flexibility and individualization.

This agency continues to forge ahead focusing on providing incarcerated persons with viable self-development services, educational opportunities and work skills. Transition planning throughout the agency is undergoing reform that integrates records management with community corrections and reentry with transition planning. As we move forward with implementation of these internal changes, I am confident that our efforts will improve the efficacy of the community reintegration process and ultimately, make a lasting impact on the safety and strength of New Mexico communities.

The courageous and resilient staff of the New Mexico Corrections Department have remained on the front lines as our world has navigated the countless continuing challenges impacting society in 2021. Facilities have continued to maintain safe institutional environments while implementing many creative solutions to continue providing vital programs and services for our inmate populations. Field staff have found creative ways to monitor people on community supervision. I am committed to continuing to guide this agency with compassion, flexibility and creativity and I am certain that our staff will continue to innovate to improve the lives of New Mexicans.

In gratitude,
Alisha Tafoya Lucero



Table of Contents

Vision, Mission, and Values	3
About the Corrections Department	5
Organizational Structure	6
COVID-19	7
Adult Prisons Division	8
Probation and Parole Division	10
Training Academy	12
Corrections Industries	14
Administrative Support	16



Mission, Vision, and Values

OUR MISSION

Strengthen New Mexico Communities through effective community supervision, creating safe and professional institutional environments and providing those entrusted to our care with opportunities for positive personal growth and self-development

OUR VISION

A Stronger New Mexico

OUR VALUES

Respect, Integrity, Service, Encouragement



About the Corrections Department

Overview

The New Mexico Corrections Department (NMCD) is New Mexico's third largest executive agency with more than 2,510 Full Time Employee positions including correctional and probation and parole officers, classification officers, records coordinators, behavioral health providers, educators, maintenance specialists, and many more. The NMCD represents just under 5% of the total general fund.

The Adult Prisons Division (APD) operates 10 correctional institutions with a housing capacity of just under 7,800. NMCD's daily average population in calendar year 2021 was 5,821. To date, calendar year 2021 indicates a continued reduction of the population. NMCD made numerous operational changes aimed at addressing individual needs and in collaboration with partner agencies focused on seeking safe alternatives to incarceration when ever appropriate.

The Probation and Parole Division (PPD) operates 5 regions made up of 46 district offices throughout New Mexico. These offices work to assist and supervise more than 13,535 people on probation and parole. As the COVID-19 continues, PPD has increased community involvement to help those suffering from the effects of the pandemic.

The New Mexico Corrections Training Academy (NMTCA) provides instruction to corrections professionals at all levels including correctional officer and probation and parole officer academies and a variety of other training services.

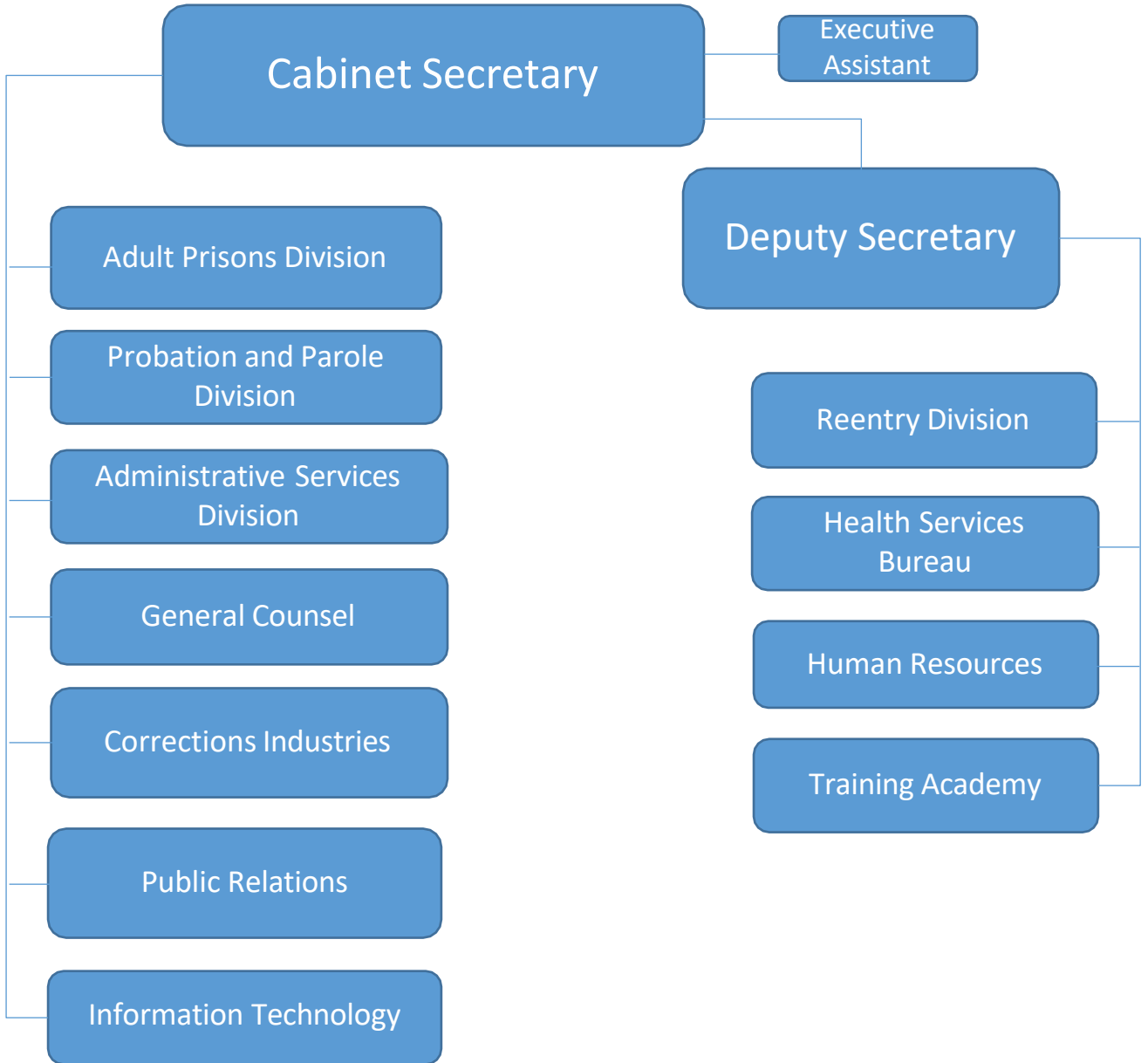
Corrections Industries (CI) program has undergone internal restructuring and is expanding operations to more effectively serve incarcerated persons and clients.

Administrative Support includes budget management, information technology, victim and constituent services, public relations, general counsel and the Office of the Secretary.

Budget and FTE

Fiscal Year 2021	FTE	Budget (in thousands)
NM Corrections Department (Overall)	2,447	\$380,818.6
Program Support	159	\$ 13,878.5
Inmate Management and Control	1,869	\$310,452.7
Corrections Industries	42	\$ 10,976.6
Community Offender Management	377	\$ 41,454.2

Organizational Structure



COVID-19

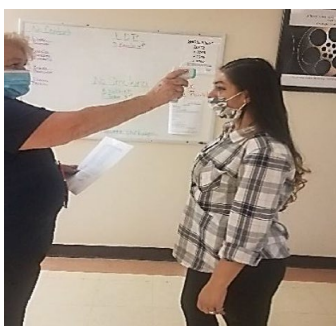
Overview

On March 11, 2020, Governor Michelle Lujan Grisham declared a Public Health Emergency in New Mexico. Under the Governor's leadership the state began implementing COVID safe practices to protect residents of the state and recognizing the dangers to those in congregant living situations, such as our facilities, NMCD followed guidelines established by the New Mexico Department of Health and Centers for Disease Control and Prevention.

2021 marks the second year of the COVID-19 pandemic and NMCD continues to enforce COVID safe practices in all facilities and administrative offices. Although plans were implemented for some staff to work from home, due to the nature of the department and the services we provide, most of our dedicated staff continued to come in to work at facilities and offices around the state.

Early in the year, vaccines became available giving the department one more tool to deal with the pandemic. Employees who were not granted vaccination exemptions, were inoculated and vaccinations were made available to inmates in our care. The extra precautions put in place such as video visits and video education classes continue today, and we want to expand on the technology to provide additional opportunities for our inmate population. Probation and Parole also continued their work with those on supervision by creating alternative working arrangements and maintaining safe face-to-face working distances.

Daily institutional life, such as inmate programming and field and office visits for Probation and Parole continue in a modified form. Once the pandemic ends, we will work to bring back in-person activities and programming in the facilities and in our offices, while implementing additional advanced technological capabilities we discovered during this Public Health Emergency.



Adult Prisons Division

Overview

The Adult Prisons Division (APD) provides administrative oversight to eight state and two privately operated prison facilities housing less than 6,00 individuals. Each facility provides case management, behavioral health, medical services, and educational programs. APD is dedicated to ensuring our prisons are operated with a priority of safety for staff, inmates, and the general public.

Major Accomplishments

This year, NMCD successfully converted two additional privately run facilities to public, reducing private bed utilization. The Guadalupe County Correctional Facility in Santa Rosa was converted from privately-run to state-run in November. This conversion has resulted in increased security and a reduction in staffing vacancies at that location. The Northwest New Mexico Correctional Facility (NWNMCF) in Grants was also converted from privately-run to state-run in November. NWNMCF is now a part of the Western New Mexico Correctional Facility (WNMCF). Combining these facilities has created one complex that allows for the consolidation of resources and has resulted in improved leadership, higher security, and increased services available to the inmate population.

Other Highlights

- The number of inmates on In-House Parole (IHP) were reduced from an average of 148 in FY20 to an average of 82 in FY21. This is a 45% decrease. This is a major accomplishment as historically NMCD has never had so few inmates on IHP, nor has the department ever had such a dramatic decrease year over year.
- All NMCD facilities were in compliance with the American Correctional Association and Prison Rape Elimination Act standards. In 2021, NMCD had six ACA accreditation audits and three PREA audits. NMCD successfully passed all audits to confirm compliance with those standards. The Adult Prisons Division strives daily to maintain these standards of excellence in all our prisons, which is only achieved through daily adherence to sound correctional practices.
- All Custody staff and most APD support staff received pay increases in 2021, helping NMCD to be competitive with competing agencies.

Job Title	2020 Hourly Rate	2021 Increase %	2021 Hourly Rate
Correctional Officer	\$18.75	6.67%	\$20.00
Sergeant	\$20.63	11.00%	\$22.90
Lieutenant	\$22.86	13.65%	\$25.98
Captain	\$26.02	14.83%	\$29.88

Adult Prisons Division continued

Institutions

Central New Mexico Correctional Facility (CNMCF) is in Los Lunas which includes the Reception and Diagnostic Center, Mental Health Treatment Center, Long Term Care Unit and Geriatric Unit. CNMCF is also the male intake facility.

Guadalupe County Correctional Facility (GCCF) is a 191,400 square-foot prison located on 440 acres near Santa Rosa with one main building which houses the administrative, medical, and program areas in addition to the housing units.

Lea County Correctional Facility (LCCF) is located approximately four miles outside the city of Hobbs on 70 acres with a total capacity of 1266 beds. The facility is operated by the GEO Group.

Northeast New Mexico Correctional Facility (NENMCF) is located four miles southeast of Clayton. Originally a private facility, in 2019 the State of New Mexico took over operations of the 179,624 square-foot facility.

Otero County Prison Facility (OCPF) is in Chaparral with a capacity to house 1421 inmates. This facility is privately operated by MTC and offers the Sex Offender Treatment Program at the facility.

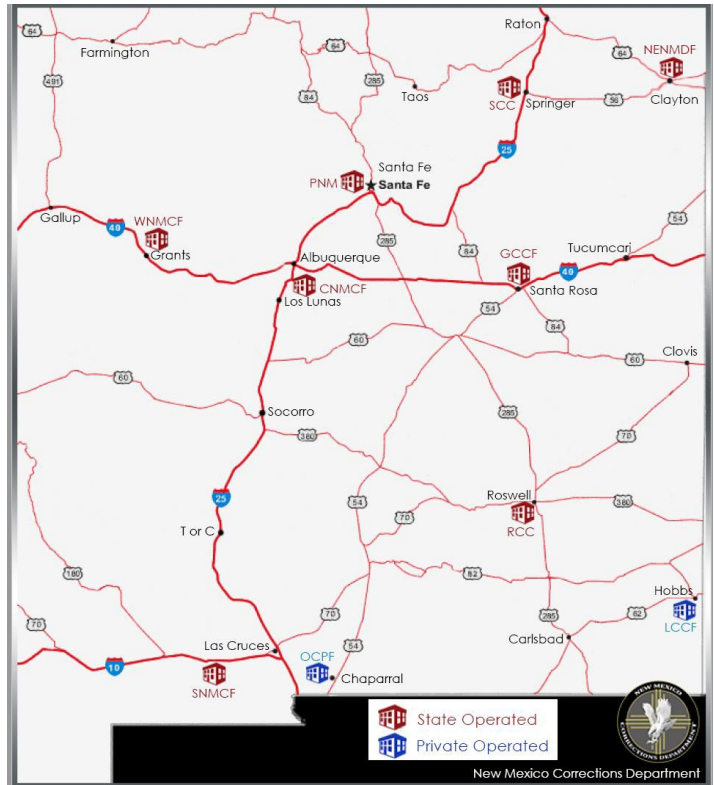
Penitentiary of New Mexico (PNM): The Penitentiary of New Mexico is in Santa Fe County and has three facilities with a capacity of 864 beds. The Predatory Behavior Management Program at houses high-security inmates and provides additional cognitive programming to individuals housed within this setting.

Roswell Correctional Center (RCC) is located outside of Hagerman and was established in 1978 and has a capacity of 340 beds. There is a large volunteer base located here with over 100 volunteers providing religious support and other services to the inmates.

Springer Correctional Center (SCC) is located 2.5 miles west of the town of Springer and was originally designed in the mid-1960s as an open campus with 10 separate living units on site. This is a female facility with a capacity of 308 beds.

Southern New Mexico Correctional Facility (SNMCF) is in Las Cruces and originally opened in 1983 as a 768-bed facility. SNMCF has two separate complexes; one being designed as a dorm setting which provides more freedom of movement and accessibility to programming for inmates.

Western New Mexico Correctional Facility (WNMCF) is in Grants, housing both men and women. The State converted the two individual facilities (one private and one State operated) into one complex with separate buildings for the men and women, managed by one warden and operated by the State. This is the female intake facility.



Probation and Parole Division

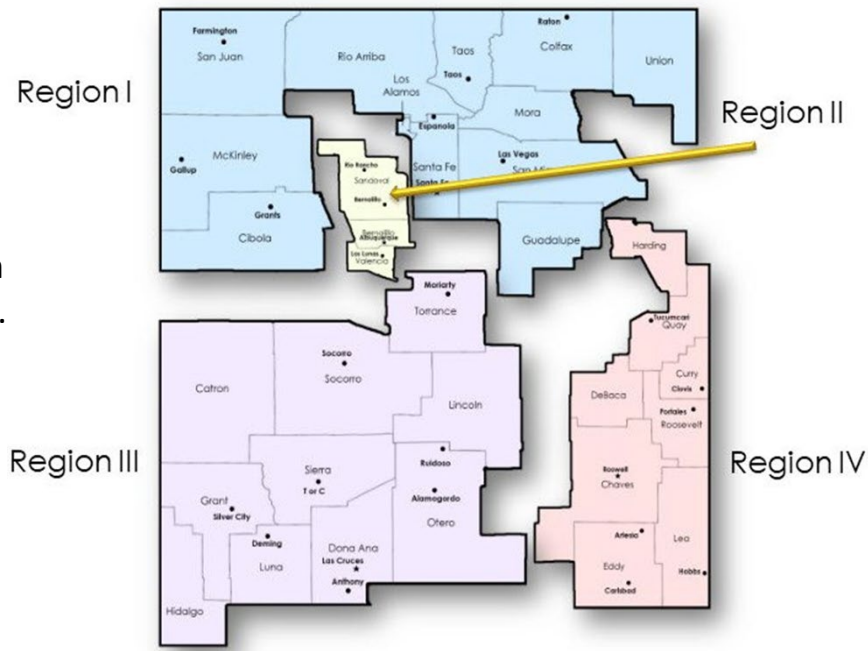
Overview

The mission of the Probation and Parole Division (PPD) is to provide for the public's safety through a balanced approach of supervision, provision of program services, and enforcement to increase the probability of offenders becoming law abiding citizens. PPD operates in five regions made up of 46 district offices throughout New Mexico, services were provided to over 13 thousand offenders in 2021.

District offices throughout the state have specialized officers supervising sex offenders, those identified as high risk, high needs, or both. The mission of the sex offender unit works to ensure public safety and reduce the risk of recidivism. Those in need of intensive supervision participate in the Community Corrections or Intensive Supervision programs.

The Community Corrections unit supervises offenders who are considered high needs and have mental health needs. Intensive supervision provides concentrated supervision to each region's most high-risk offenders. These offenders typically include gang members, repeat felons, and violent offenders. Services available to offenders include inpatient and outpatient substance abuse programs, mental health counseling, domestic violence counseling, sex offender counseling, financial assistance and housing assistance. While participating in these programs, offenders are given additional support and are required to report more frequently as part of a structured supervision plan. Standard supervision officers supervise those offenders who are less likely to re-offend and who do not fit the criteria of special programs.

The department also operates a 24-hour Response Center, it is a 7 day per week operation that is staffed by Probation Parole Supervisors and Probation Parole Officers. Phone calls are received from law enforcement officials, victims, offenders, family and public statewide.



Probation and Parole Division continued

Major Accomplishments

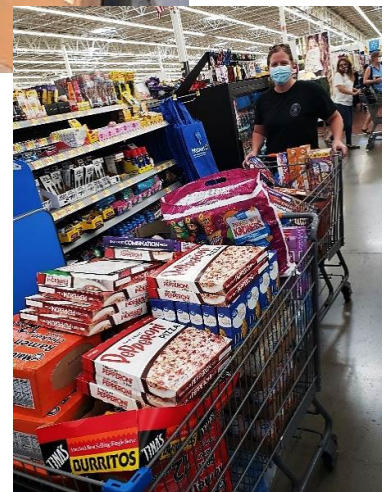
Over the last year officers worked with community providers to create ways for offenders to utilize virtual services during the coronavirus pandemic. They worked with outpatient providers to ensure telehealth services were available where possible. New housing providers were secured for additional placement options and officers worked with area hotels to set up a funding process for offenders in emergent situations.

Officers participated in many activities throughout the last year to include assisting the Department of Health at Covid vaccine sites, participating in NMCD recruitment and Special Olympics fundraisers, collecting donations of clothing and hygiene items, purchasing food for covid positive and quarantined clients, assisting clients with resources and housing and working with our community partners to ensure they had what they needed to continue providing services to our clients throughout the year.



Other Highlights

- Food donations to the Rio Grande Food Project, Espanola Soup Kitchen and Community Pantry in Grants.
- Donation of toys for Christmas Holiday to the Clovis Children Youth and Families Department.
- Donations of sleeping bags to Good Shepherd Center during winter months
- School supply and hygiene collection drives.
- Vitalant Blood Drive.
- Shop with a Hero.
- Donation of 4 new car seats to the Pregnancy Center in Portales.



Training Academy

Overview

The New Mexico Corrections Training Academy (NMCTA) is responsible for recruiting, screening, and training both custody and non-custody employees for NMCD through an eight-week basic training academy for Correctional Officers and a six-week basic training academy for Probation and Parole Officers. In addition, NMCTA offers training to

non-custody staff through programs such as Corrections 101 and assists with outside agency training through the Court Officer Basic Training academy and the New Mexico Sheriff's Conference.



Major Accomplishments

2021 Academy Classes

Class	Location	Start Date	# Graduated
374	NMCTA	1/11/21	6
375	NMCTA	3/8/21	16
376	NMCTA	5/17/21	12
377	NMCTA	7/26/21	8
378	LCCF	8/2/21	8
379	NWNMCC & WNMCF	9/7/21	8
380	NMCTA	9/27/21	13
381	SNMCF	9/27/21	12
CBW #16	NMCTA	1/4/21	6
CBW #17	NMCTA	4/5/21	5
CBW #18	NMCTA	6/14/21	6
CBW #19	NMCTA	7/19/21	6
Total			106

Training Academy continued

Other Highlights

- In 2021, the NMCTA added three new instructors with both correctional officer and probation and parole experience
- The NMCTA developed and implemented a new Correctional Officer Specialist training for non-custody staff who will supervise inmates in the performance of their duties. This program also included staff from the NM Forestry Service.



- The NMCTA assisted with screening and recruiting efforts around the state and screened a total of **260** applicants with **204** approved to attend training.



- The NMCTA hosted multiple Corrections 101 programs to orient **64** newly hired, non-custody staff to the realities of working in a prison environment and also hosted a Probation and Parole Officer Basic Training classes that certified **15** new officers.

- The NCMTA offers advanced training for currently certified staff that includes staff development courses such as COMPAS and OMNI, new instructor development through the Training for Trainers (T4T) program, and annual recertification trainings including firearms, defensive tactics, and use of force.

Corrections Industries

Overview

The Corrections Industries Program (CI) provides inmates marketable vocational training and transferable work experience to prepare them for employment upon release. CI offers a wide range of opportunities for inmates in the fields of woodworking and furniture building, printing and design, invoicing and warehouse management, computer skills, and the importance of safe and professional work environments. Program expansion in the areas of horticulture and manufacturing are in the works for the future. Wages earned through CI jobs allow inmates to contribute to the Crime Victims Fund, family and child support, legal financial obligations, court ordered restitution, court costs and savings for use upon release.

In addition to the benefits to inmates, CI offers affordable products to government entities such as the Judiciary, Federal, State, and Local Law Enforcement Communities. Custom products are also available to non-profit organizations and the division has donated products to those agencies.



Major Accomplishments

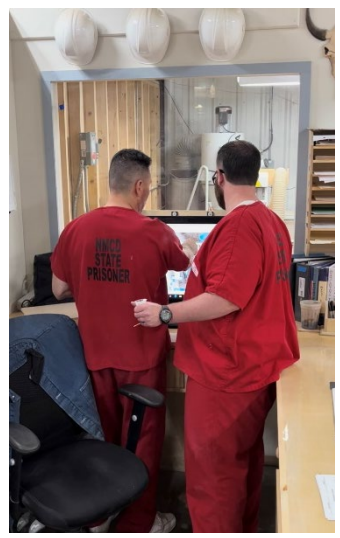
- This year, one major accomplishment was securing a contract with the Mid Region Council of Governments (MRCOG) to reupholster over 3000 Rail Runner seats. This contract marks the continued partnership between the two entities and opportunities for inmates to expand their skills in upholstery and sewing.
- Second, the plans to relocate and expand the Print Plant from GCCF to WNMCF continues, with the hopes of adding digital printers and wide format printers and plotters.



Corrections Industries continued

Other Highlights

- Incorporated additional vocational training courses with work programs to ensure that inmates are provided with proper training, hands on experience, and certification in various trades.
- Continued work with local businesses and community leaders to grow enterprise functions.
- Entered into new Commissary agreements for canteen and property items with Union Supply.
- Increased the number of inmates participating in Corrections Industries Programs
- Strengthened CI's partnership with New Mexico National Guard to refurbish and replace all furniture in 32 buildings across the state in the next eight years.
- Improved printing shop operations to provide more efficient, cost-effective, high-quality products to customers.
- Continued research of low-cost skill-building opportunities for inmates with potential for revenue growth
- Established internet presence to increase revenue by engaging in [online sales](#) .
- Hosted various film scouting tours that generated interest in new film productions.





Administrative Support

Overview

Administrative Support includes the Administrative Services Division (ASD), Office of General Counsel (OGC), Information Technology (IT), Victim and Constituent Services, and Public Relations, all serving the Office of the Secretary.

Administrative Services Division

ASD is comprised of three bureaus: Budget, Financial Management and General Services, and Procurement Bureaus. ASD provides guidance, information, and expertise in the administrative support areas to ensure the New Mexico Corrections Department meets statutory, regulatory, and internal administrative requirements. A priority of the division is to ensure professional service, excellence, accountability, an internal control structure, and integrity in fiscal management.

Office of General Counsel

OGC manages all legal matters for NMCD. The Office provides legal representation to NMCD or its employees in employment and labor law, civil rights, tort claims, judgment and sentence interpretation issues, and miscellaneous civil and criminal matters. OGC provide training to Correctional Officer cadets through each Academy and specialized training to other employees upon request.

Information Technology

IT creates and maintains strong information technology tools and systems to support agency staff and promote departmental efficiency and accountability to increase the department's ability to provide public safety.

Victim and Constituent Services

Victim and Constituents Services serves as a resource by providing assistance to victims and inmate families, the Parole Board, and outside agencies. In addition, the division provides training to victim advocates across the state and to internal employees upon request.

Public Relations

The Public Relations office is responsible for building and maintaining positive relationships with the media by providing accurate and transparent information, promoting events and program successes, and representing the department.